

URBAN TECH

Smart city technologies

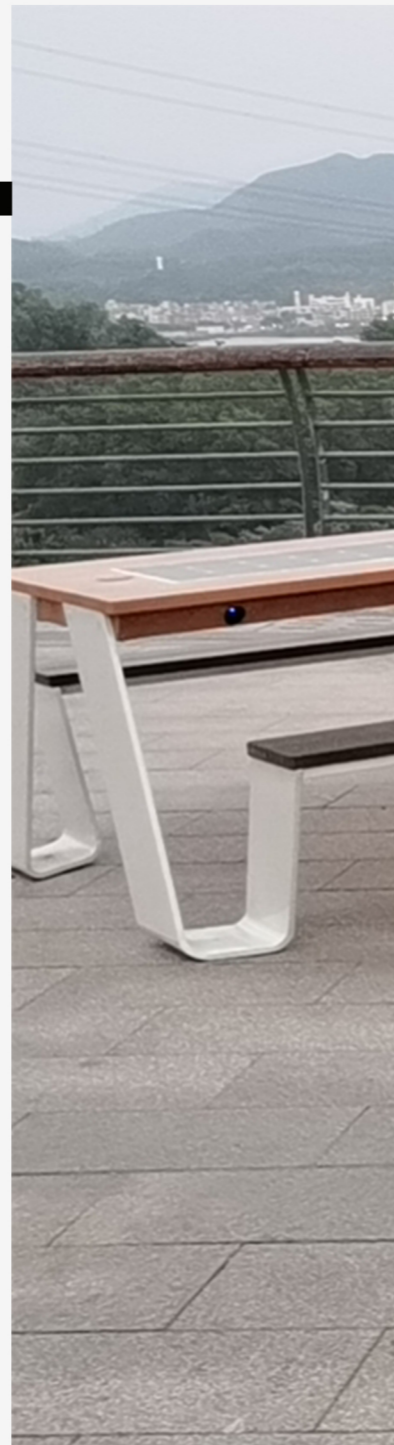
Official Distributor

Strada Buftea Nr. 1, Cluj-Napoca
Buftea Business Center, Etaj 2
office@urbantech.ro
www.urban-tech.ro



SOLAR SMART STREET FURNITURE

- Stainless Steel Structure
- Solar Panel
- Monocrystalline Silicon
- USB Charger
- Wireless Charger
- Sensor Control
- Led light Spot
- Bluetooth Speaker
- Wi-Fi 4G International Router
- Led Strip Light
- MPPT Controller
- Smart Voices
- Battery
- Sockets
- AC Power
- Led Screen
- TV Display
- GPS



MODEL:

WYC1814	WYC2001	WYE1804
WY1817	WYC2001A	WYB2001
WYC1826	WYC1812A	WYB2002
WYC1855	WYC2004	WYB2003
WYC1901	WYC1801	WYB2005
WYC1916	WYC1801A	WYB2006
WYC1919	WYC1838	WYB2008
WYC2021	WYC1923	WYB2011
WYC1904	WYC1801D	WYS1802R
WYC1811	WYC1834	WYS1825
WYC1811A	WYC1929B	WYS1804
WYC1907	WYC1844	WYS1805
WYC1853	WYC1841	WYS1815
WYC1821A	WYE1803	

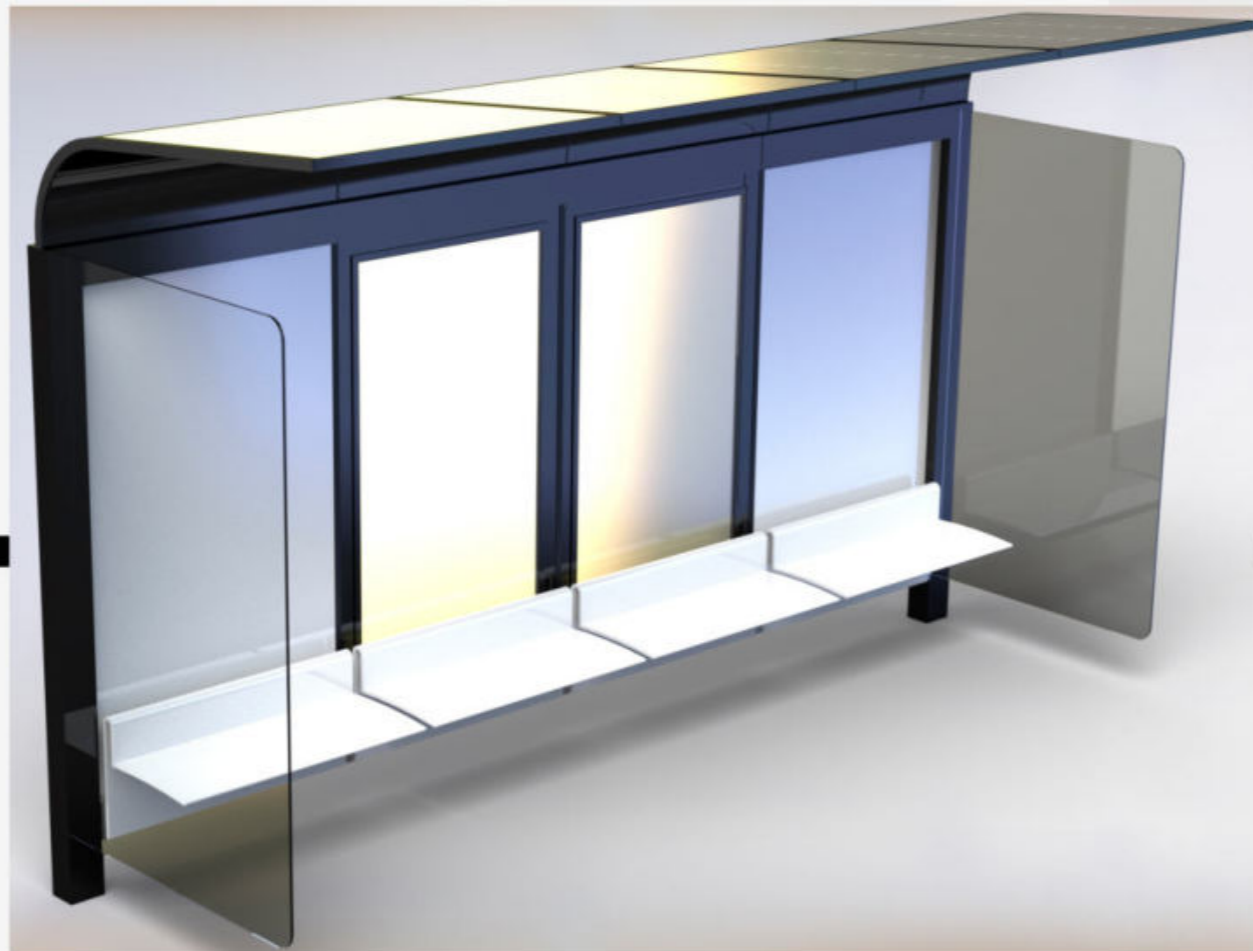
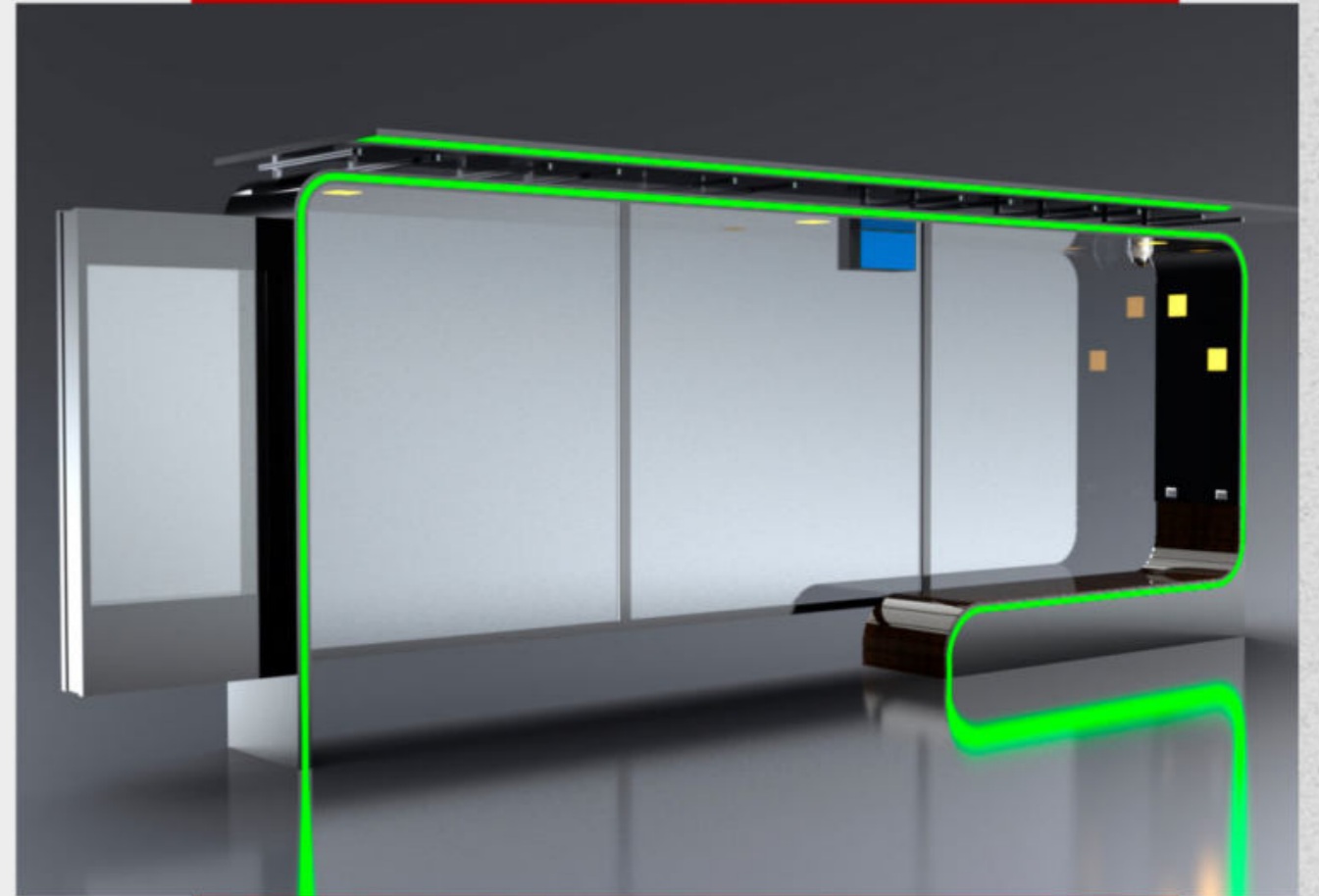
Doesn't include Our Smart Platform/APP

Option Total Smart City with our Platform/APP

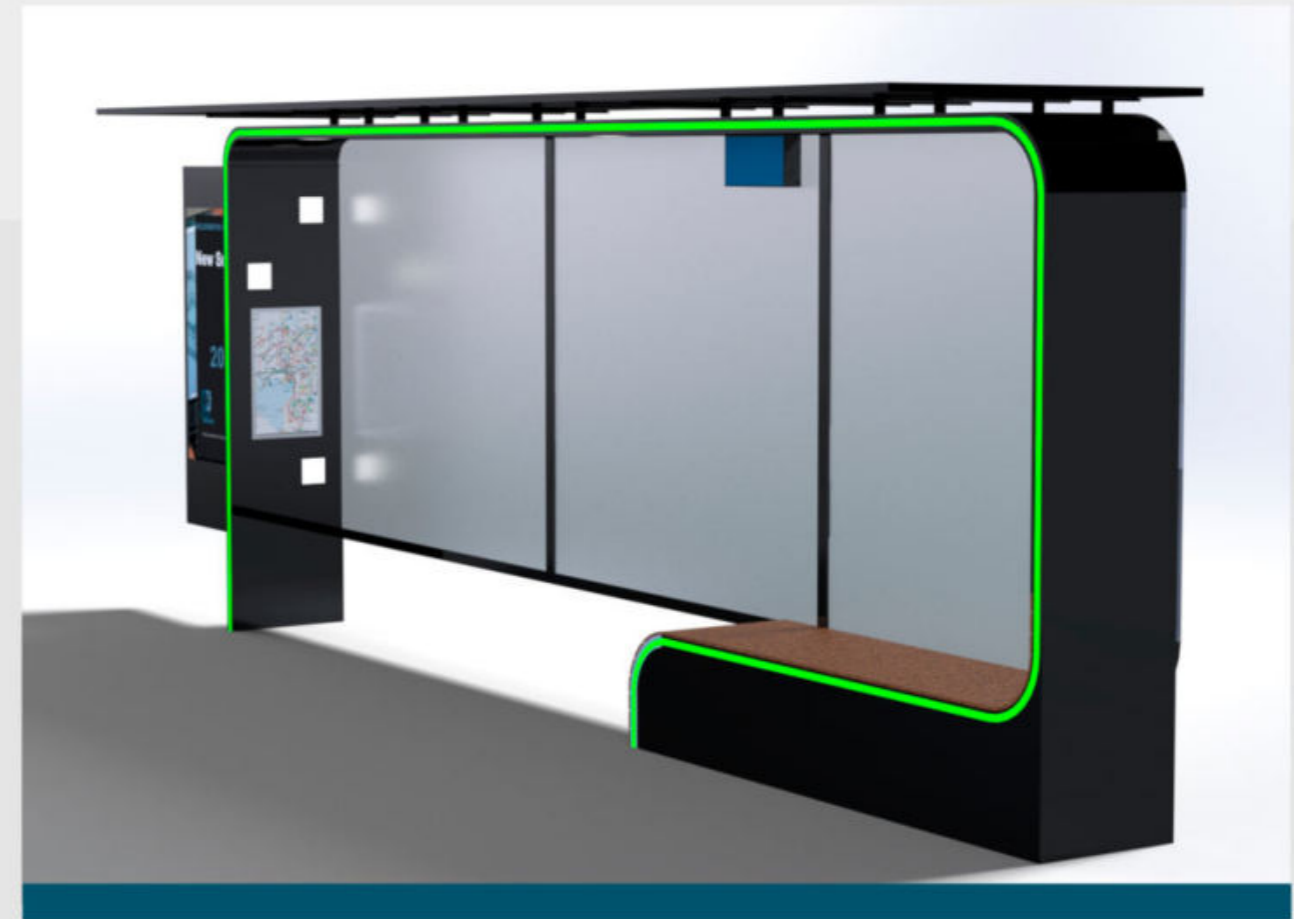
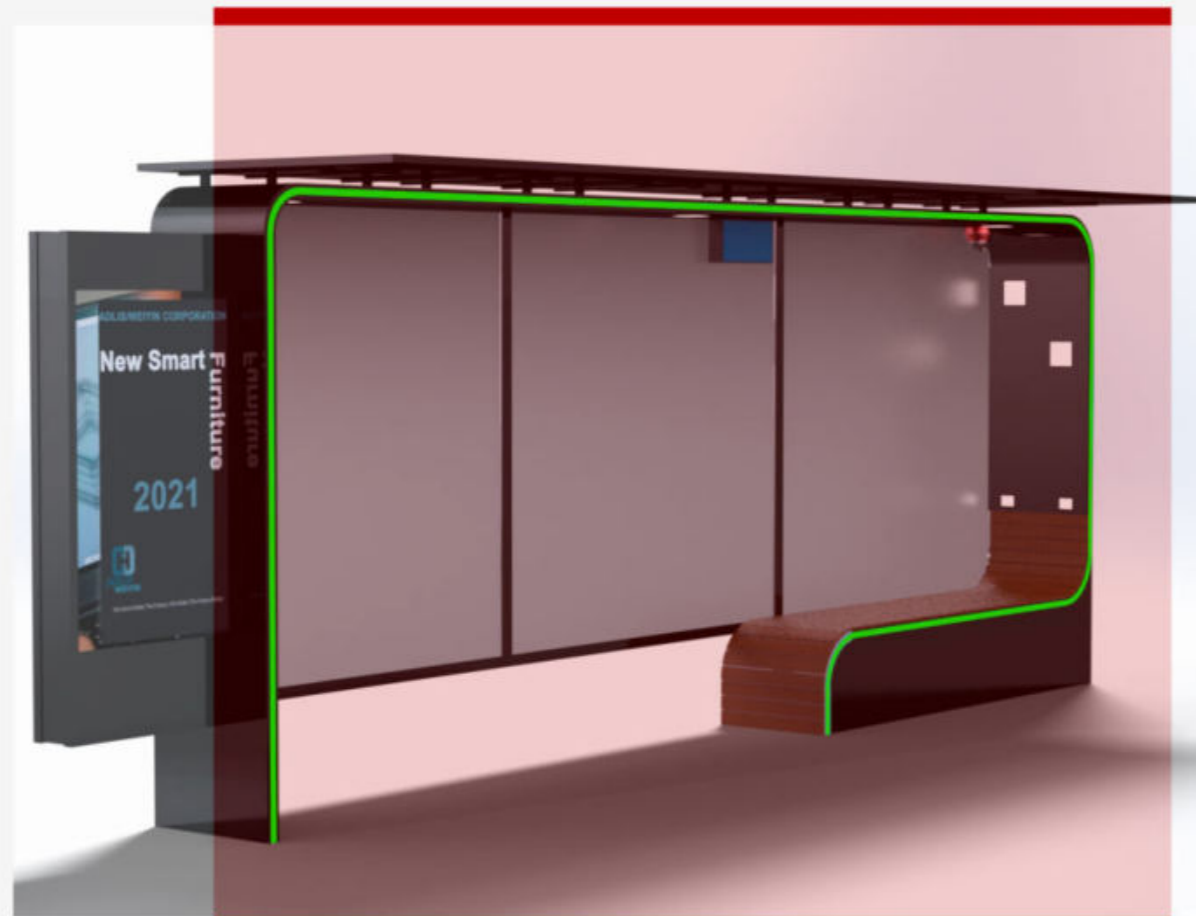
For more information about ADLIS SMART platform: service@adlissmart.com

sales@solarbenchchina.com





SOLAR SMART BUS SHELTER

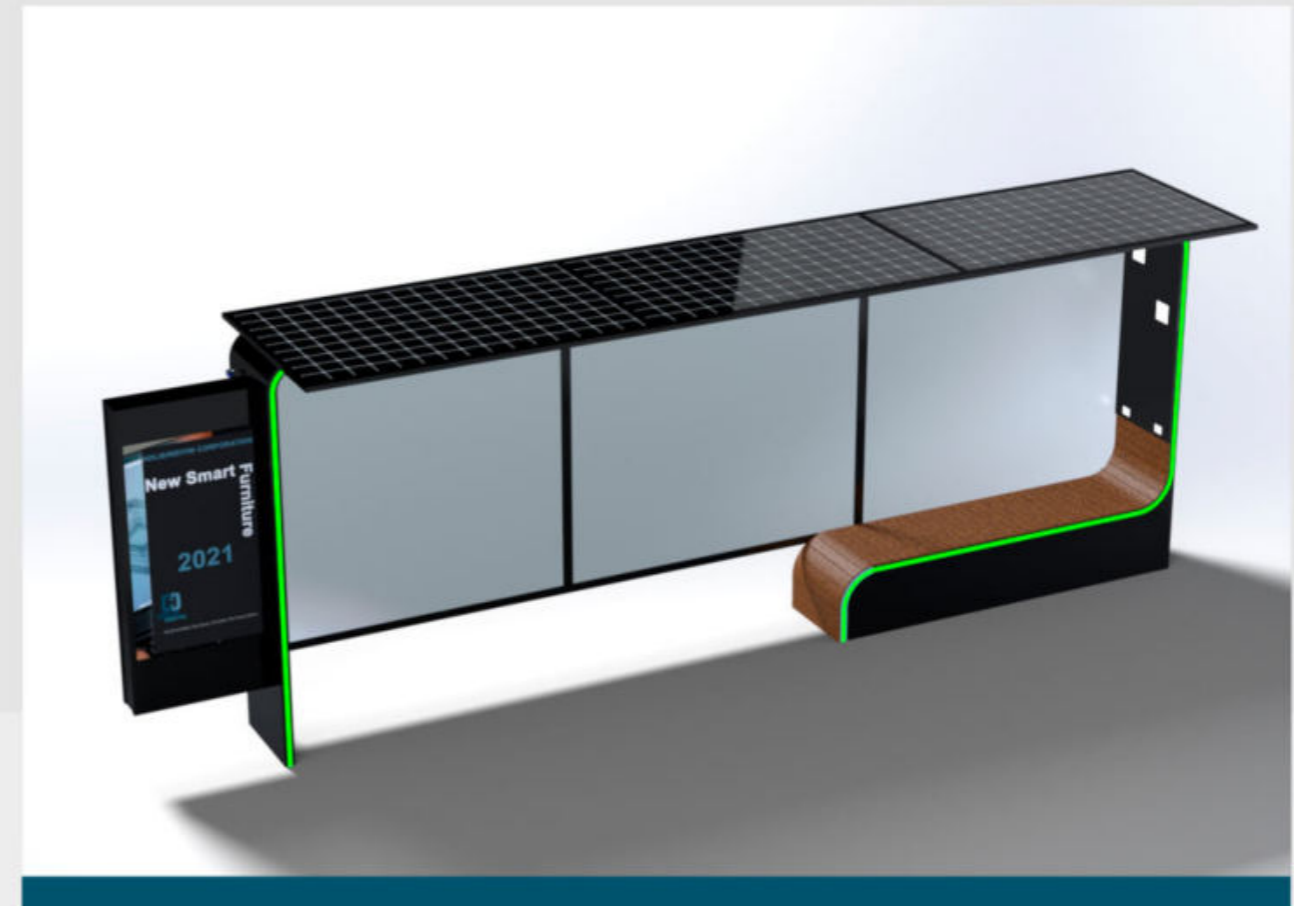


The price doesn't include our Smart Platform/APP
For more information about ADLIS SMART platform: service@adlissmart.com
sales@solarbenchchina.com

WYS1802R

Material: Stainless steel #201 + WPC wood
Dimensions: L- 6050cm, W- 130cm, H- 247cm
Solar Panel: 720W
Battery capacity: 12V, 200AH
Controller Type: MPPT
Weight: estimated 2200kg
Led Strip Light
Led Spot Light
USB charging: 2
Smart CCTV Video Camera
WI-FI
Touch Panel
Led Screen Information
Digital Panel
Smart Sensor

OPTION: INDOOR WITHOUT SOLAR PANEL



SOLAR SMART BUS SHELTER



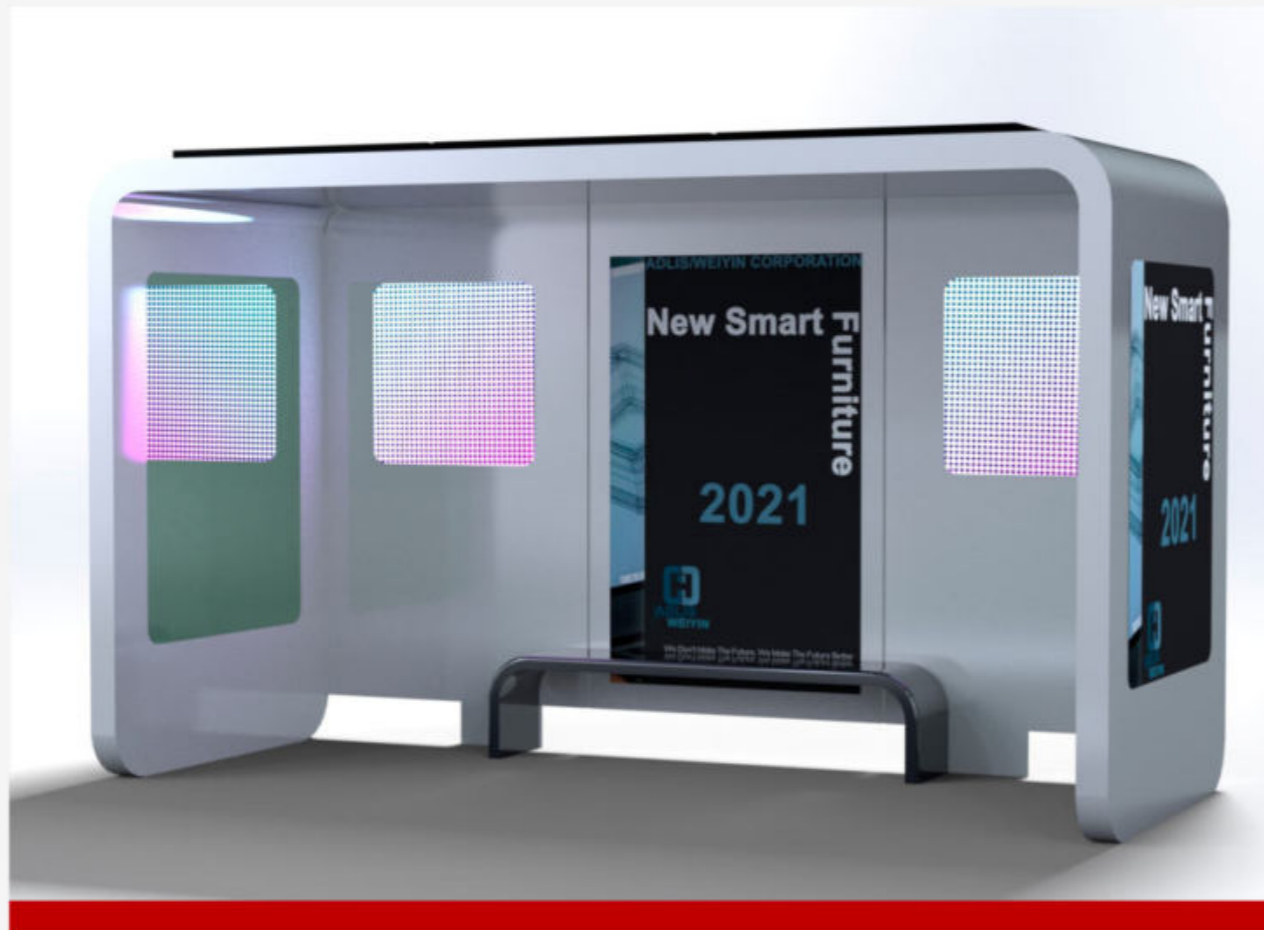
WYS1825



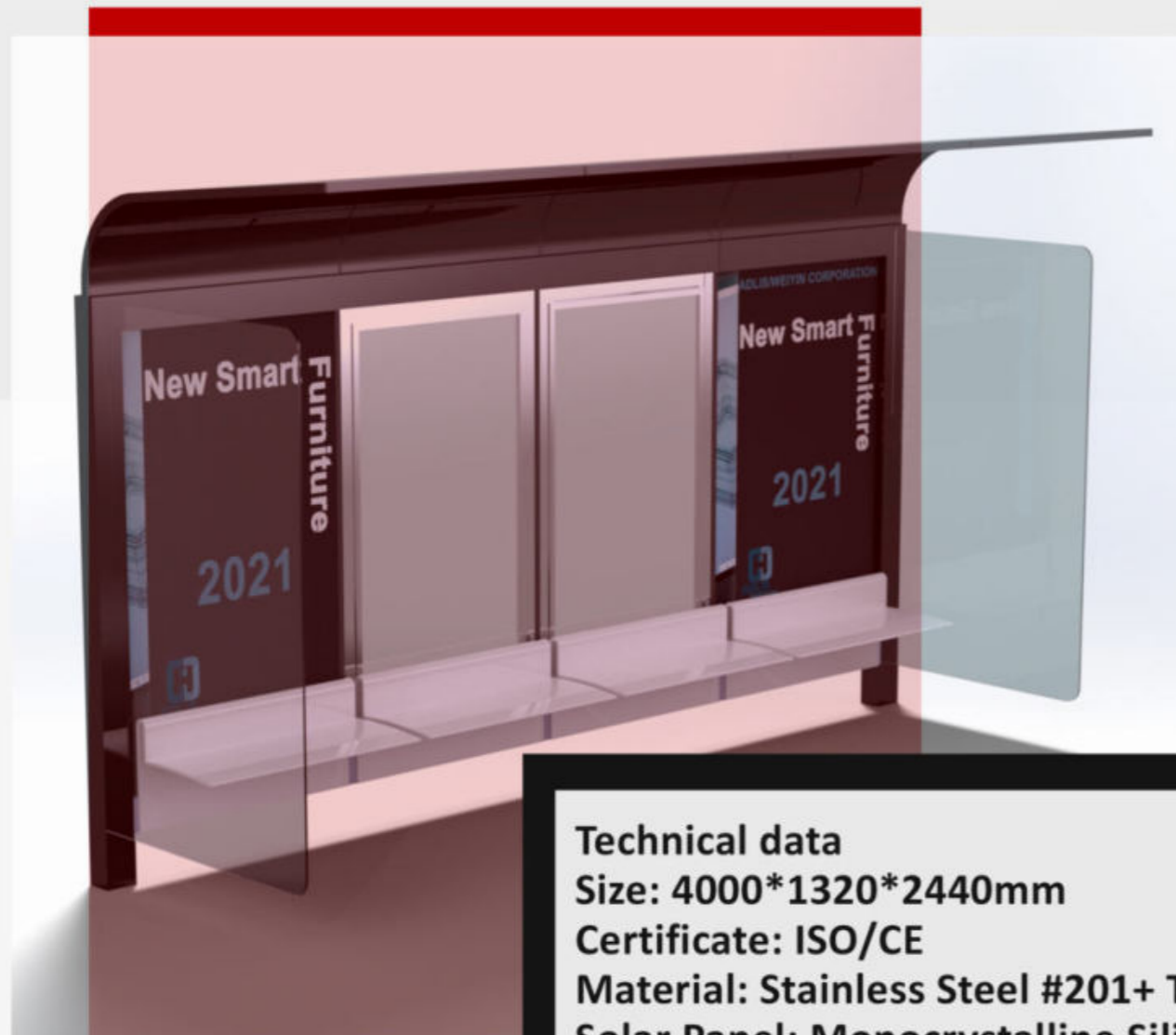
The price doesn't include our Smart Platform/APP
For more information about ADLIS SMART platform: service@adlissmart.com
sales@solarbenchchina.com

Size: 4000*1500*2400mm
Certificate: ISO/CE
Material: Galvanized Steel/Stainless Steel #201
+ Tempered Glass
Solar Panel: Monocrystalline Silicon, 560W
AC Power: Optional
Controller: MPPT
Battery Type: Gel battery/LiFePO4/
Lithium optional
Battery Capacity: 12V/220AH
USB Charger: 2
Wireless Charger: 0
Advertising Display: 3 LED light boxes*2 windows
LED screen: full color, 2pcs
WIFI router: 4G / International router

OPTION: INDOOR WITHOUT SOLAR PANEL



SOLAR SMART BUS SHELTER



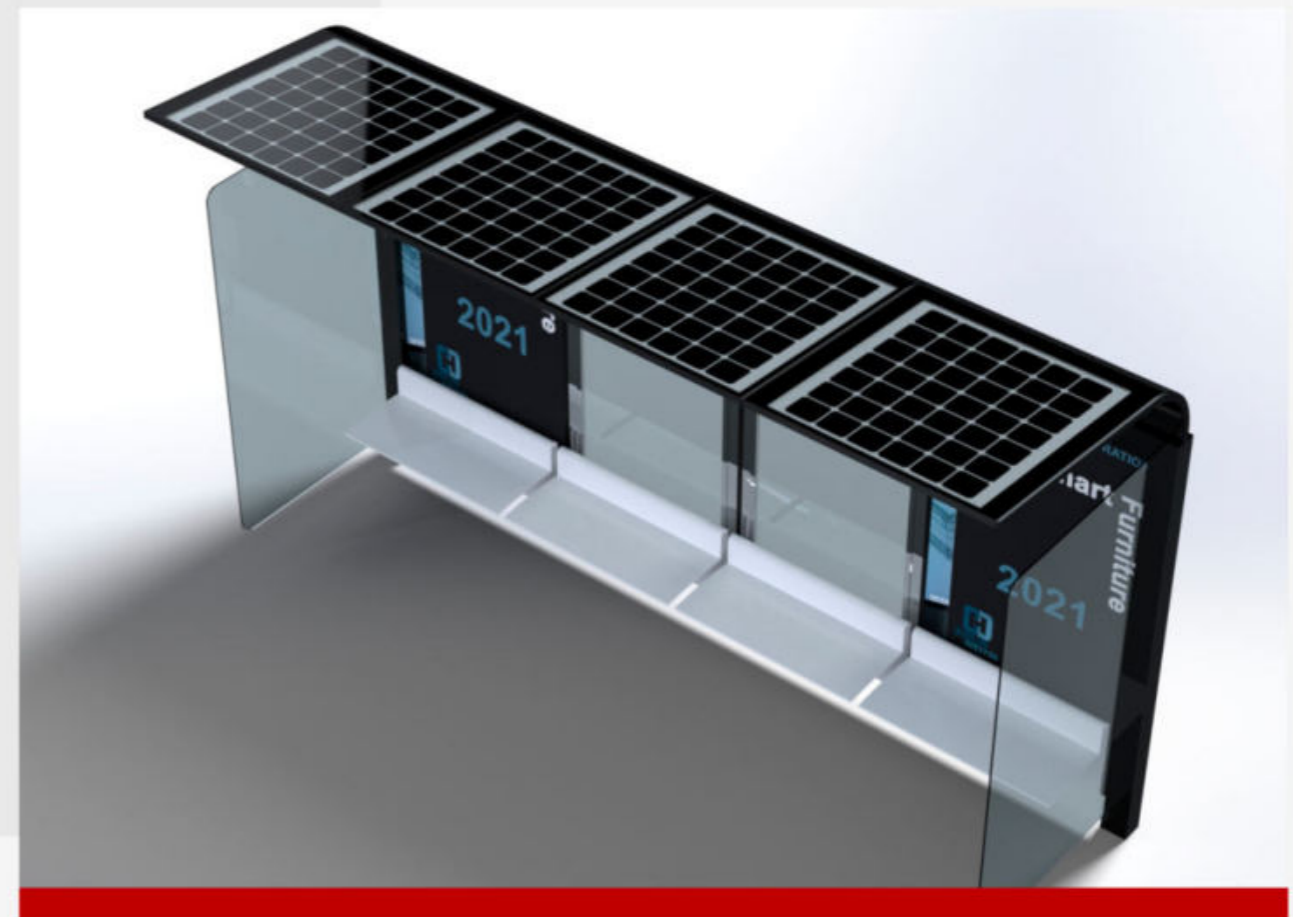
WYS1804



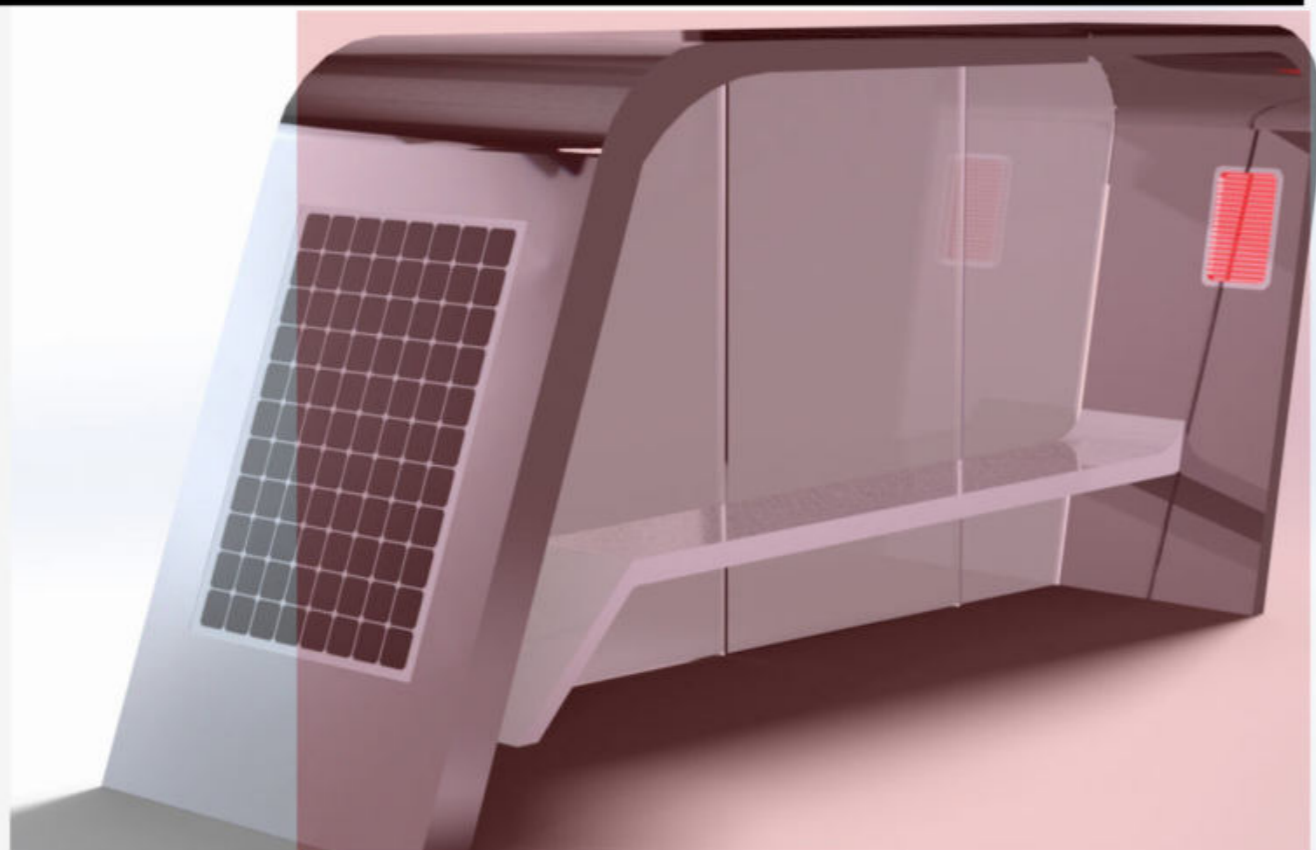
The price doesn't include our Smart Platform/APP
For more information about ADLIS SMART platform: service@adlissmart.com
sales@solarbenchchina.com

Technical data
Size: 4000*1320*2440mm
Certificate: ISO/CE
Material: Stainless Steel #201+ Tempered Glass
Solar Panel: Monocrystalline Silicon, 560W
AC Power: Optional
Controller: MPPT
Battery Type: Gel battery/LiFePO4 optional
Battery Capacity: 12V/220AH
USB Charger: 2
Wireless Charger: 2
Advertising Display: 2 LED light box*2 window
WIFI router: 4G / International router
Customized size and specification available

OPTION: INDOOR WITHOUT SOLAR PANEL



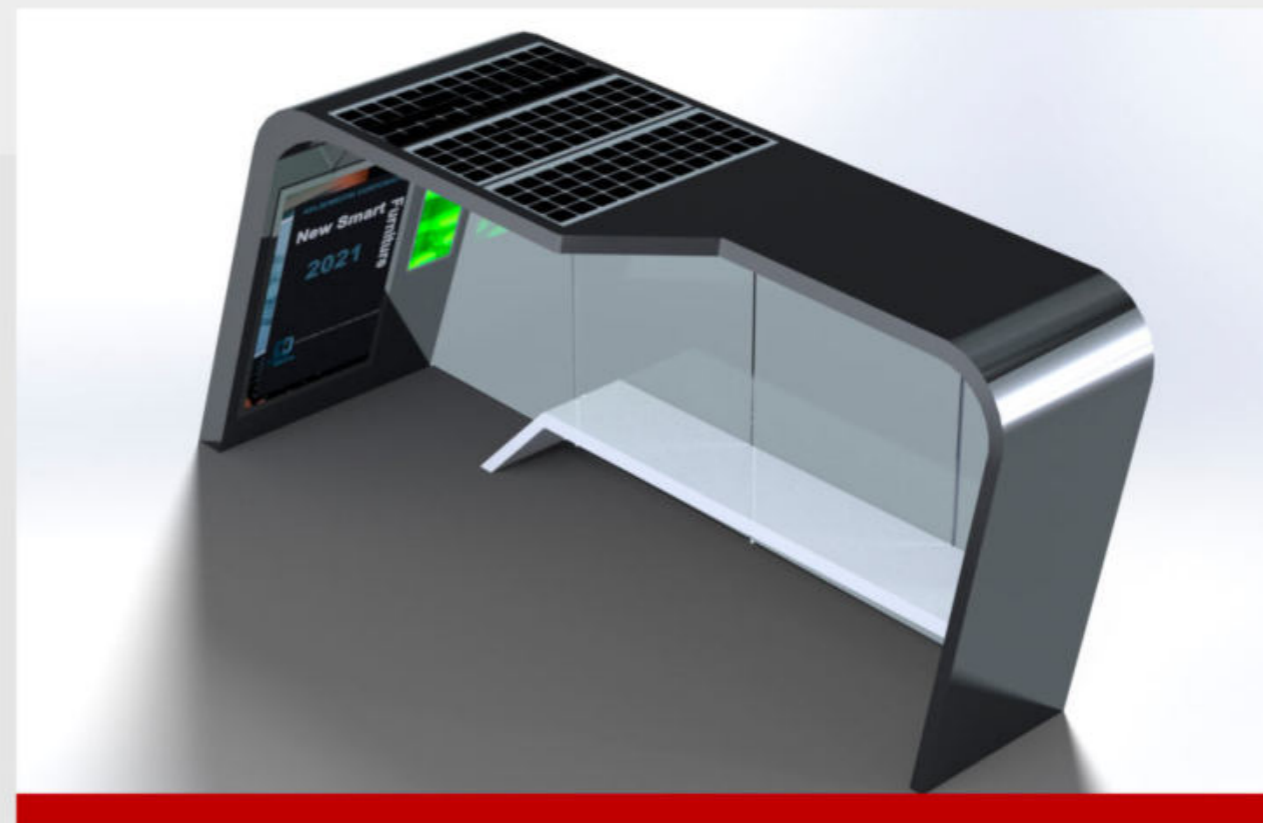
SOLAR SMART BUS SHELTER



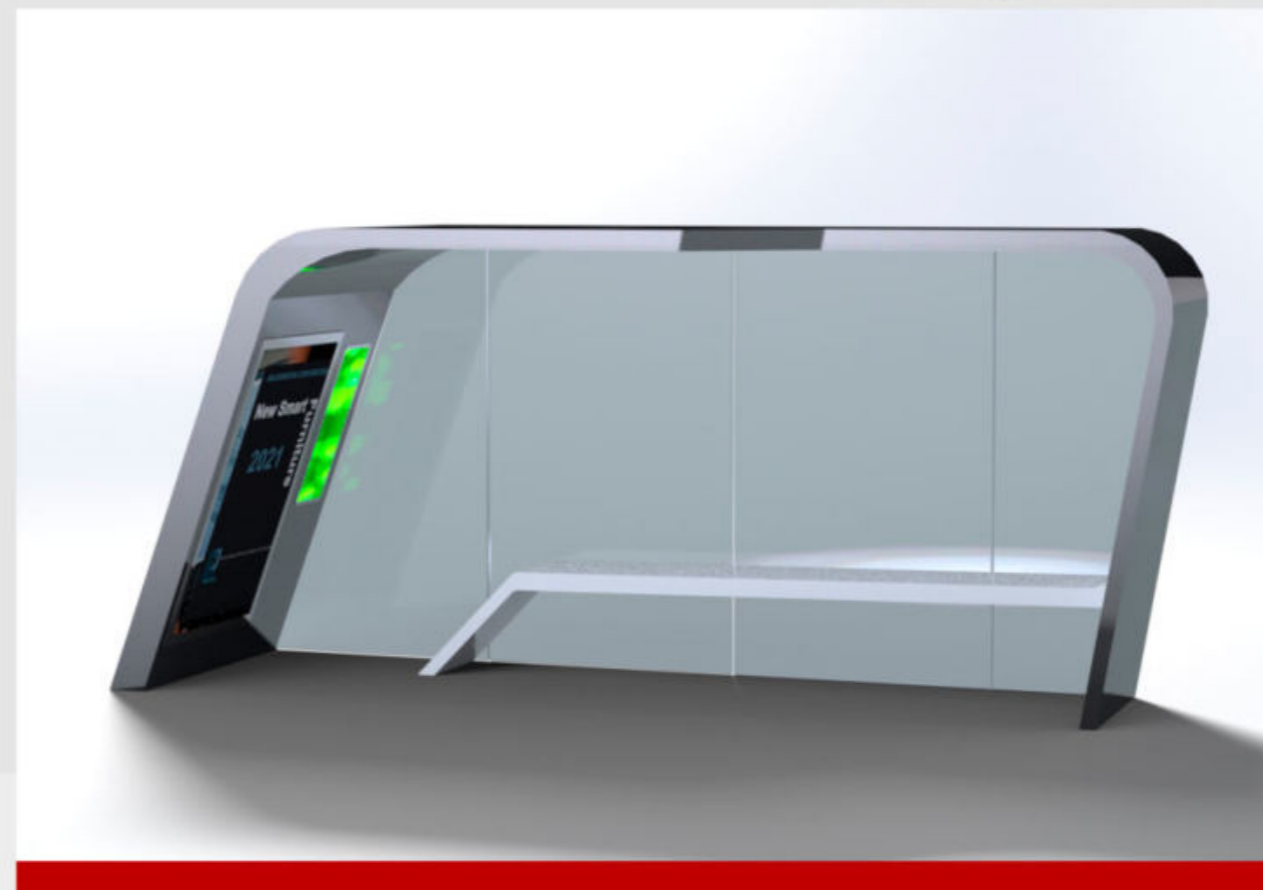
WYS1805

Size: 4500/9000*1050-1600*2400mm
Certificate: ISO/CE
Material: Galvanized Steel/Stainless Steel #201
+ Tempered Glass
Solar Panel: Monocrystalline Silicon,
560W/1120W
AC Power: Optional
Controller: MPPT
Battery Type: Gel battery/LiFePO4/
Lithium optional
Battery Capacity: 12V/220AH/440AH
USB Charger: 2/4
Wireless Charger: 0
Led Light: Led Strip light Inside
Advertising Display: 1 LED light box*2 window
LED screen: full color, 2pcs
WIFI router: 4G / International router

OPTION: INDOOR WITHOUT SOLAR PANEL



The price doesn't include our Smart Platform/APP
For more information about ADLIS SMART platform: service@adlissmart.com
sales@solarbenchchina.com



SOLAR SMART BUS SHELTER

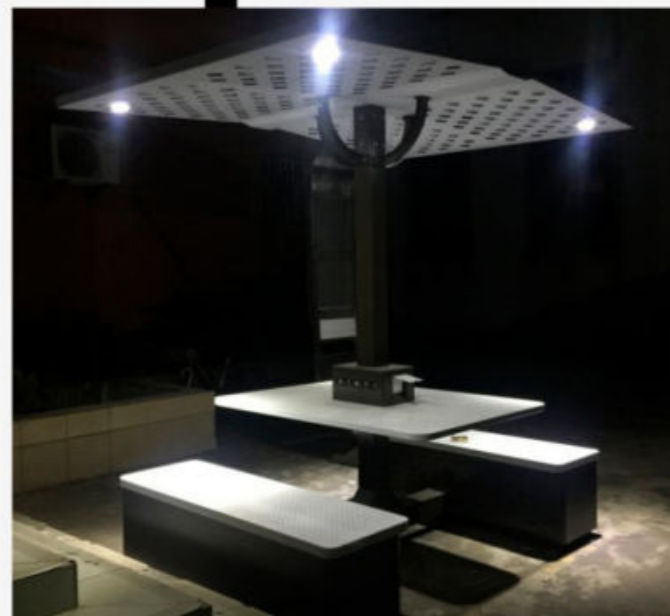


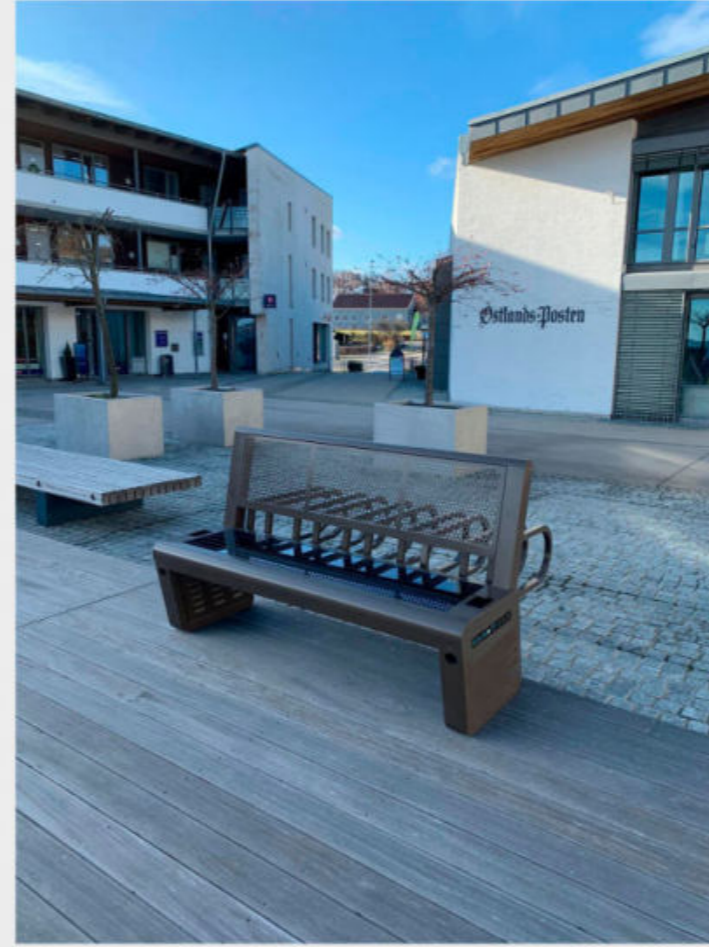
The price doesn't include our Smart Platform/APP
For more information about ADLIS SMART platform: service@adlissmart.com
sales@solarbenchchina.com



WYS1815

Size: 4000*1600*2400mm
Certificate: ISO/CE
Material: Galvanized Steel/Stainless Steel #201
+ Tempered Glass
Solar Panel: Monocrystalline Silicon, 560W
AC Power: Optional
Controller: MPPT
Battery Type: Gel battery/LiFePO4/Lithium optional
Battery Capacity: 12V/220AH
USB Charger: 2
Wireless Charger: 0
Led Light: Led Strip light Inside
Advertising Display: 1 LED light box*2 window
+ 2 posters*2 windows
WIFI router: 4G / International router
OPTION: INDOOR WITHOUT SOLAR PANEL





Phone: +4 0747058458
<https://www.urban-tech.ro>





UrbanTech

Official Distributor

Urban Tech

Str. Buftea 1,
Buftea Business Center,
Cluj-Napoca, Cluj

Phone: +4 0747058458
+4 0751975727

<https://www.urban-tech.ro>
office@urban-tech.ro



**We Don't Make The Future,
We Make The Future Better.**

